

泉州市知名商标



泉州得力农林机械有限公司
QUANZHOU DELI AGROFORESTRAL MACHINERY CO., LTD

INTRODUCTION OF QUANZHOU DELI AGROFORESTRAL MACHINERY CO., LTD.

泉州得力农林机械有限公司简介

Established in 2003, Quanzhou Deli Agroforestral Machinery Co., Ltd. integrating development and production together, located in the hometown of Oolong tea -- Quanzhou City, specializing in manufacturing and marketing Tea Manufacturing Machines, such as Tea Harvester, Tea Pruning Machine, Tea Withering Machine, Tea Fixation Machine, Tea Rolling Machine, Tea Fermentation Machine, Tea Dryer Machine, Tea Sorter, Tea Packing Machine, , totally more than 30 varieties in five major categories. Our company has "Deli Assistant" brand, after decades of operation and development, it has been highly recognized by customers in the United States, Russia, Canada, Georgia, Turkey, Peru, India and other countries, in Russia, Georgia, India, Vietnam, Peru and Turkey, we have offices that provide fast and high quality service to local customers.

Our customers all over the world, as long as there are tea processing areas, you can see our machines, our customer include Russia, Georgia, Azerbaijan, Belarus, Ukraine, etc. in Eastern Europe, Britain, Netherlands, Germany, etc. in Western Europe, Turkey, Iran, Syria, Yemen, Kuwait in the Middle East, Myanmar, Vietnam, Indonesia, Laos in Southeast Asia, Cambodia, Thailand, India, Sri Lanka, Bangladesh, Nepal, Bhutan, etc. in South Asia, Mexico, United States, Canada, Bolivia in Central and South America, Brazil, Argentina, Chile, Peru, Belize, Colombia, etc., in Australia Australia and New Zealand, Africa has Uganda, Nigeria, Ethiopia, Mozambique, Kenya, etc.

With sincere cooperation, the overall quality competitiveness of our products have been improved. A new type of tea processing machines by ourselves is going to be launched soon. In order to meet customers' requirements at the first moment, we specially set up the spare parts stores for after-sales service and establishes the after-sales service teams. we aim to provide all our customers with the highest level of service, from supplying the best quality products to delivering them safely and quickly to your door in record time. If you have any questions, please do not hesitate to contact our patient customer service who will be delighted to assist you. All customer comments or queries are taken into account in the fine tuning of our service.



The tea harvester has a wide range of uses, which can reduce labor costs and increase the amount of tea picking. At the same time, it can also pick crops such as lavender.

▶ Battery Tea Harvester

Model	DL-4CD-35
Engine Type	Brushless Motor
Voltage	24 V
Power	200 W
Speed	2400 RPM
Cutting Width	30 cm
Packing Size	62×28×19cm 6.8kgs
Rack Weight	1.6 kgs
Battery Type	24V 10Ah Lithium Battery
Working Time	More than 8 hours
Price	



▶ Backpack Gasoline Engine Tea Harvester

Model	DL-4C-A	DL-4C-Z	DL-4C-T	DL-4C-S39	DL-4C-H3
Engine Model	NATIKA 1E34F	KOMATSU G26LS	mitsubishi TU26	HUASHENG 139F	HONDA GX35
Stroke	2 Stroke	2 Stroke	2 Stroke	4 Stroke	4 Stroke
Displacement	25.4 CC	25.4 CC	25.4 CC	31 CC	35 CC
Power	0.7 KW	0.81 KW	0.7 KW	0.7 KW	1.35 KW
HP	0.9 HP	1.1 HP	0.9 HP	0.9 HP	0.9 HP
Rack Packing Size			98×30×25cm 7.8kg		
Engine Packing Size			35×45×37cm 6.1kg		
Cutting Width	45cm / 50cm / 60cm				
Price					



▶ Handheld Gasoline Engine Tea Harvester

Model	DL-4C-T50A5	DL-4C-T606
Engine Model	NATIKA 1E34F	MITSUBISHI TU26
Stroke	2 Stroke	2 Stroke
Displacement	25.4 CC	25.4 CC
Power	0.7 KW	0.7 KW
HP	0.9 HP	0.9 HP
Packing Size	108×33×32cm 9.8kgs	
Cutting Width	45cm / 60cm	
Price		



► 2-Men Use Tea Harvester Machine

Model	DL-4CP-1000	DL-4CP-1210	DL-4CH-1000	DL-4CH-1210
Engine Model	G4K			
Stroke	2 Stroke			
Displacement	41.5 CC			
Power	2.2 KW			
HP	2.9 HP			
Packing Size	142×52×45cm 24kgs			
Blade Type	Straight		Curved	
Cutting Width	1000mm	1210mm	1000mm	1210mm
Price				



2-Men use tea picking machine is widely used in South Asia, Southeast Asia, Africa and other large tea producing areas, with the advantage of large picking volume. Some regions, such as Europe and North America, also use this machine to pick lavender

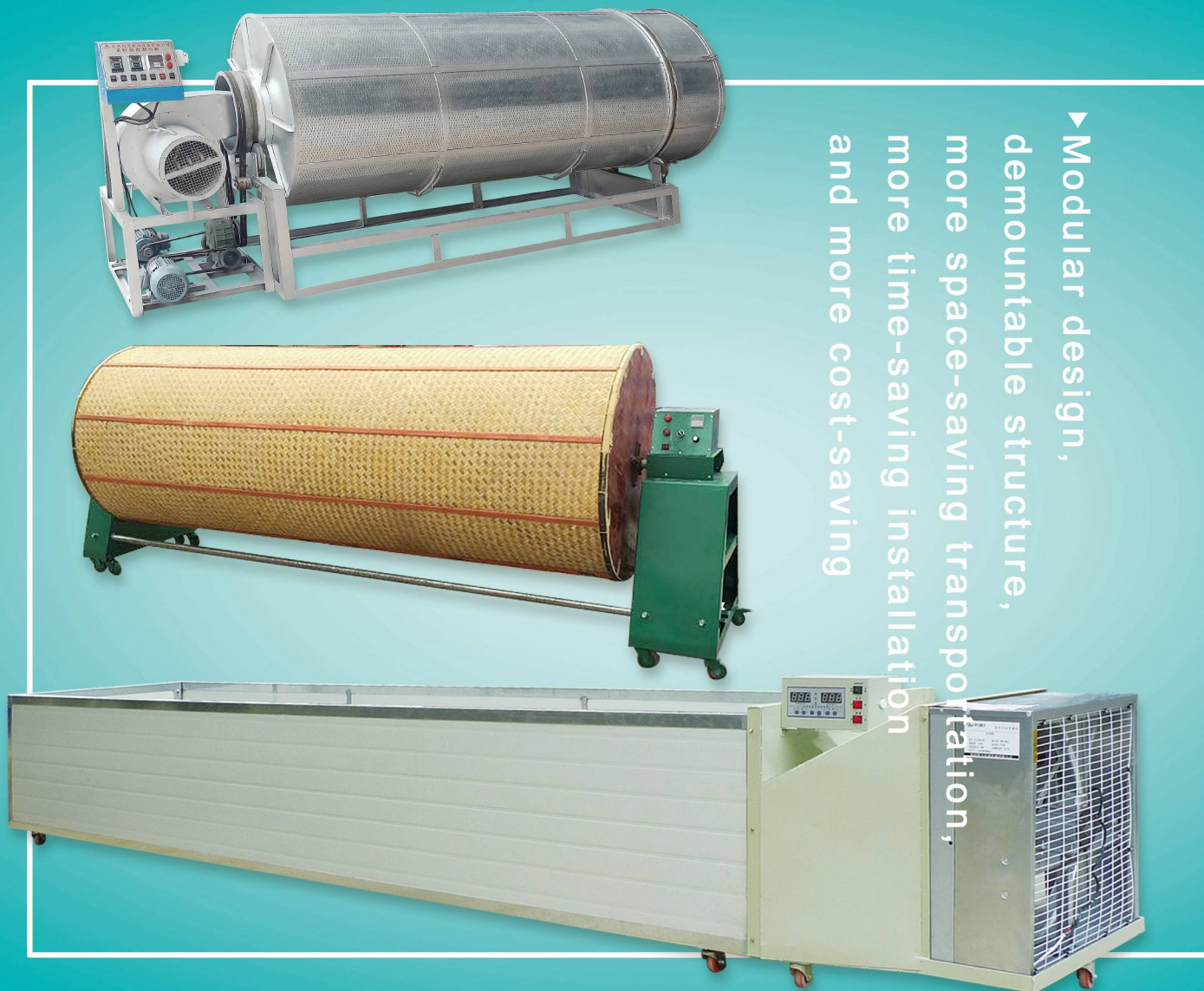


In order to pick low herbs and flowers, we designed a new type of tea picker with 4 wheels. It is easy to use, easy to operate, and the picking height is adjustable, which is perfect for picking crops in flat areas.

TEA WITHER EQUIPMENT

Оборудование для заварки чая

► Modular design,
dismountable structure,
more space-saving transportation,
more time-saving installation,
and more cost-saving



Tea Wither Rack / Pallet
Стеллаж для чая



Tea Tossing Machine

Машина для подбрасывания чая



Big Tea Leaf Cutting Machine
Машина для резки листьев большого чая

► Bamboo Type Natural Wither Rack

Model	DL-TQJ-20
Size	1120×680×2100mm
Sieve Diameter	110 cm
Layers	20 pcs
Layer Height	12 cm
Sieve Materials	All Bamboo
Rack Materials	Galvanized steel / Stainless steel
Capacity	50 kg/batch
Application	All kind tea
Price	



► Tea Withering Machine Heater

Model	DL-6CWD-580	DL-6CWD-890
Size	805*1000*105	905*1100*1150
Voltage	380V 50HZ	380V 50HZ
Heating Type	Electric Heating Wire	
Heating Power	15 kw	18 kw
Heating Wire Group	3 Group	6 Group
Fan Motor Power	250W	370W
Fan Motor Speed	850 rpm	850 rpm
Fan Motor Voltage	220V / 380V	220V / 380V
Matchable Withering Length	2500-7500mm	7500-10000mm
Price		



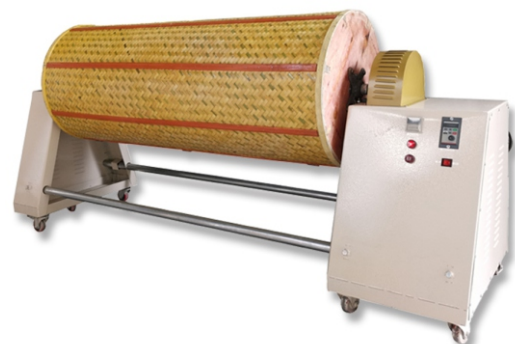
► Tea Withering Machine Completely

Model	DL-6CWD-250	DL-6CWD-580	DL-6CWD-1090
Dimensions	2500×1000×1050 mm	5800×1000×1050 mm	10800×1100×1150 mm
voltage / frequency	380V 50HZ	380V 50HZ	380V 50HZ
Heating element	Heating wire	Heating wire	Heating wire
Total heating power	15 KW	15 KW	18 KW
Heating element group	3 Group	3 Group	3 Group
Fan power	250 W	250 W	250 W
Motor speed	2200 r/min	2200 r/min	2200 r/min
Rated voltage	220 V	220 V	220 V
Disk size	980×2500×200 mm	980×5000×200 mm	1080×10000×200 mm
Output	50 Kg/batch	100 Kg/batch	220 Kg/batch
Materials	Contact with tea is stainless steel		
Application	Black tea, white tea, oolong tea, green tea		
Price			



► Oolong Tea Shaking Drum Machine

Model	DL-6CYQT-6015	DL-6CYQT-9025	DL-6CYQT-9025-2
Input voltage	220V / 380V	220V / 380V	220V / 380V
Dimensions(L×W×H)	2100×800×1000 mm	3050×920×1350 mm	5900×920×1350 mm
Roller diameter	600 mm	900 mm	900 mm
Roller length	1500 mm	2500 mm	2500 mm × 2
Drive motor	power	0.75 kW	1.1 kW
	speed	1400 r/min	1400 r/min
	Rated voltage	380 V	220V / 380 V
Working speed of roller	0-30 r/min	0-30 r/min	0-30 r/min
Roller materials	Bamboo	Bamboo	Bamboo
Capacity	32 kg/batch	120 kg/batch	240 kg/batch
Application	Oolong tea		
Price			



► Hot Air Oolong Tea Shaking Drum

Model		DL-6CZQ-110	DL-6CZQ-110B
Dimensions(LengthxWidthxHeight)		3760×1120×1450 mm	3760×1120×1450 mm
voltage / frequency		380/50 V/Hz	380/50 V/Hz
Total heating power		12 kW	12 kW
Fast and slow drum drive motor	Power	2.2 kW	2.2 kW
	Speed	1400 r/min	1400 r/min
2 sets	Voltage	380 V	380 V
	Power	1.5 kW	1.5 kW
Fan power	Speed	1400 r/min	1400 r/min
	Voltage	380 V	380 V
Working speed of roller		15-30 r/min	15-30 r/min
Inner diameter of roller		1100 mm	1100 mm
Length of roller		3000 mm	3000 mm
Output		100 Kg/batch	100 Kg/batch
Materials		Galvanized steel	Stainless steel
Application		Oolong tea	
Price			



► Big Leaf Cutting Machine

Model		DL-6GCCQ-30	DL-6GCCQ-30-2	DL-6GCCQ-50	DL-6GCCQ-50-2
Dimension		600×1300×900 mm		760×1350×900 mm	
Voltage		220/50 V/Hz		220/50 V/Hz	
Belt drive motor	Power	1.1 KW		1.1 KW	
	Speed	1400 rpm		1400 rpm	
	Voltage	220 V		220 V	
Blade drive motor	Power	Only have 1 motor	400 W	Only have 1 motor	400 W
	Speed	Only have 1 motor	1400 rpm	Only have 1 motor	1400 rpm
	Voltage	Only have 1 motor	220 V	Only have 1 motor	220 V
Conveyor belt width		300 mm		500 mm	
Effective cutting width		290 mm		490 mm	
Efficiency		150 kg/h		250 kg/h	
Price					



► Soft Basket For Tea Processing

Model	DL-6CRH-120B	DL-6CRH-120Z
Diameter	120 cm	120 cm
Materials	Inside Bamboo Outside Cotton Cloth	All Bamboo
Flexibility	90%	90%
Price		



Tea soft basket mainly used for temporary storage of tea, easy to transfer tea between each processing process, ultra soft, can be arbitrarily curled.

REMOVING GREEN MACHINE 茶叶杀青设备系列

▼传统工艺与现代科技的完美结合
电加热、气加热、
生物质燃料加热、
传统柴煤加热
均可选择



►替代手工炒茶的理想设备 - “朝天锅”

▶ Gas Heating Tea Fixation Machine

Model	DL-6CST-50	DL-6CST-50B	DL-6CST-50QB
Inner Drum Materials (contact with tea)	Carbon steel	Stainless steel	Stainless steel
Outer Drum Materials	Painted steel board	Painted steel board	Stainless steel
Dimensions	780×1400×1530 mm		
Voltage	220V 50HZ		
Drum inner diameter	500 mm		
Drum inner length	600 mm		
Drive motor	Power	0.75 KW	
	Speed	1390 rpm	
	Voltage	220 V	
Exhaust fan	Power	85 W	
	Speed	2200 rpm	
	Voltage	220 V	
Drum speed	5-37 min		
Heating type	Liquid gas / Natural gas / Propane gas		
Capacity per batch	3 kg/h		
Capacity per hour	25 kg/h		
Price			



▶ Gas Heating Tea Fixation Machine

Model	DL-6CST-70	DL-6CST-70B	DL-6CST-70QB
Inner Drum Materials (contact with tea)	Carbon steel	Stainless steel	Stainless steel
Outer Drum Materials	Painted steel board	Painted steel board	Stainless steel
Dimensions	980×1565×1630 mm		
Voltage	220V 50HZ		
Drum inner diameter	700 mm		
Drum inner length	1000 mm		
Drive motor	Power	0.75 KW	
	Speed	1390 rpm	
	Voltage	220 V	
Exhaust fan	Power	85 W	
	Speed	2200 rpm	
	Voltage	220 V	
Drum speed	5-37 rpm		
Heating type	Liquid gas / Natural gas / Propane gas		
Capacity per batch	5 kg/h		
Efficiency	50 kg/h		
Price			



▶ Gas Heating Tea Fixation Machine

Model	DL-6CST-90	DL-6CST-90B	DL-6CST-90QB
Inner Drum Materials (contact with tea)	Carbon steel	Stainless steel	Stainless steel
Outer Drum Materials	Painted steel board	Painted steel board	Stainless steel
Dimensions	1230×2100×1840 mm		
Voltage	220V / 380V		
Drum inner diameter	900 mm		
Drum inner length	1240 mm		
Drive motor	Power	0.75 KW	
	Speed	1390 rpm	
	Voltage	380 V	
Exhaust fan	Power	85 W	
	Speed	2200 rpm	
	Voltage	220 V	
Drum speed	5-37 rpm		
Heating type	Liquid gas / Natural gas / Propane gas		
Capacity per batch	10 kg/batch		
Efficiency	100 kg/h		
Price			



▶ Gas Heating Tea Fixation Machine

Model	DL-6CST-100	DL-6CST-100B	DL-6CST-100QB
Inner Drum Materials (contact with tea)	Carbon steel	Stainless steel	Stainless steel
Outer Drum Materials	Painted steel board	Painted steel board	Stainless steel
Dimensions	1330×2400×2010 mm		
Voltage	220V / 380V		
Drum inner diameter	1000 mm		
Drum inner length	1250 mm		
Drive motor	Power	0.75 KW	
	Speed	1400 rpm	
	Voltage	380 V	
Exhaust fan	Power	85 W	
	Speed	2200 rpm	
	Voltage	220 V	
Drum speed	5-37 rpm		
Heating type	Liquid gas / Natural gas / Propane gas		
Capacity per batch	15 kg/batch		
Efficiency	150 kg/h		
Price			



► Electric Heating Tea Fixation Machine

Model	DL-6CST-D50	DL-6CST-D50B	DL-6CST-D50QB
Inner Drum Materials (contact with tea)	Carbon steel	Stainless steel	Stainless steel
Outer Drum Materials	Painted steel board	Painted steel board	Stainless steel
Dimensions	780×1400×1530 mm		
Voltage	380V 50HZ		
Heating type	Electric heating		
Heating Power	18 KW		
Drum inner diameter	500 mm		
Drum inner length	600 mm		
Drive motor	Power	0.75 KW	
	Speed	1390 rpm	
	Voltage	220 V	
Exhaust fan	Power	85 W	
	Speed	2200 rpm	
	Voltage	220 V	
Drum speed	5-37 min		
Capacity per batch	3 kg/h		
Capacity per hour	25 kg/h		
Price			



► Electric Heating Tea Fixation Machine

Model	DL-6CST-D70	DL-6CST-D70B	DL-6CST-D70QB
Inner Drum Materials (contact with tea)	Carbon steel	Stainless steel	Stainless steel
Outer Drum Materials	Painted steel board	Painted steel board	Stainless steel
Dimensions	980×1565×1630 mm		
Voltage	380V 50HZ		
Heating type	Electric heating		
Heating Power	24 KW		
Drum inner diameter	700 mm		
Drum inner length	1000 mm		
Drive motor	Power	0.75 KW	
	Speed	1390 rpm	
	Voltage	220 V	
Exhaust fan	Power	85 W	
	Speed	2200 rpm	
	Voltage	220 V	
Drum speed	5-37 min		
Capacity per batch	5 kg/h		
Capacity per hour	50 kg/h		
Price			



Optional pneumatic discharge



Fully Stainless Steel Type



English Version Panel



Stainless Steel Drum



► Tea Hand Roasting Pot

Model	DL-6CSCG-60	DL-6CSG-60B
Pot materials	Carbon steel	Carbon steel
Dimension	800×800×420 mm	770×700×780 mm
Voltage	220/50 V/Hz	220/50 V/Hz
Heating element	Electric heating wire	Electric heating wire
Heating power	3 KW	4.5 KW
Pot diameter	600 mm	570 mm
Pot depth	225 mm	220 mm
Efficiency	2 kg/time	2 kg/time
Price		



► Tea Fixation Pot (Imitation manual fixing)

Model	DL-6CSTG-100	DL-6CSTG-100Z	DL-6CSTG-DC100
Pot Materials	Carbon steel	Cast Iron	Carbon steel
Dimension	1300×1780×1550 mm		
Voltage	220V 50HZ	220V 50HZ	380V 50HZ
Heating type	Gas	Gas	HF Induction
Total Power	0.7 kw	0.7 kw	18kw
Pot inner diameter	1000 mm		
Pot inner depth	950 mm		
Drive motor	Power	0.5 KW	
	Speed	1400 rpm	
	Voltage	220 V	
Blow Motor	Power	120W	
	Speed	1400 rpm	
	Voltage	220V	
Pot speed	5-37 rpm		
Efficiency	20 kg/time		
Price			

This tea fixation pot machine highly imitates the process of manual tea roasting; the industry's first pot can rotate 360 degrees, the tea is fixed without dead corners, and the fixation is more uniform.



► Wood/Coal Heating Tea Fixation And Revolving Dryer

Model	DL-6CSTP-CM90	DL-6CSTP-CM90B	DL-6CSTP-CM110	DL-6CSTP-CM110B
Inner drum materials (contact with tea)	Cast iron	Stainless Steel	Cast iron	Stainless Steel
Dimension	2100×1100×1840mm		2100×1300×1940mm	
Voltage	220V / 380V		220V / 380V	
Inner drum diameter	900 mm		1100 mm	
Inner drum length	1000 mm		1000 mm	
Drive motor	Power	0.75 kw	1.5 kw	
	Speed	1400 rpm	1400 rpm	
	Voltage	220V / 380V	220V / 380V	
Exhaust motor	Power	0.18 kw	0.18 kw	
	Speed	1400 rpm	2200 rpm	
	Voltage	220V / 380V	220V / 380V	
Blower motor	Power	0.15 kw	0.15 kw	
	Speed	2800 rpm	2800 rpm	
	Voltage	220 V	220 V	
Drum speed	5-37 rpm		5-37 rpm	
Heating type	Wood / Coal		Wood / Coal	
Efficiency	20 kg/batch		35 kg/batch	
Price				



► Electric Heating Tea Fixation And Revolving Dryer

Model	DL-6CSTP-D90	DL-6CSTP-D90B	DL-6CSTP-D110	DL-6CSTP-D110B
Inner drum materials (contact with tea)	Cast iron	Stainless Steel	Cast iron	Stainless Steel
Dimension	2100×1100×1840mm		2100×1300×1940mm	
Voltage	380V		380V	
Inner drum diameter	900 mm		1100 mm	
Inner drum length	1000 mm		1000 mm	
Drive motor	Power	0.75 kw	1.5 kw	
	Speed	1400 rpm	1400 rpm	
	Voltage	220V / 380V	220V / 380V	
Blower motor	Power	0.15 kw	0.15 kw	
	Speed	2800 rpm	2800 rpm	
	Voltage	220 V	220 V	
Drum speed	5-37 rpm		5-37 rpm	
Heating type	Electric heating		Electric heating	
Heating Power	27 KW		36 KW	
Efficiency	20 kg/batch		35 kg/batch	
Price				



► Gas Heating Tea Fixation And Revolving Dryer

Model	DL-6CSTP-Q90	DL-6CSTP-Q90B	DL-6CSTP-Q110	DL-6CSTP-Q110B
Inner drum materials (contact with tea)	Cast iron	Stainless Steel	Cast iron	Stainless Steel
Dimension	2100×1100×1840mm		2100×1300×1940mm	
Voltage	220V / 380V		220V / 380V	
Inner drum diameter	900 mm		1100 mm	
Inner drum length	1000 mm		1000 mm	
Drive motor	Power	0.75 kw	1.5 kw	
	Speed	1400 rpm	1400 rpm	
	Voltage	220V / 380V	220V / 380V	
Blower motor	Power	0.15 kw	0.15 kw	
	Speed	2800 rpm	2800 rpm	
	Voltage	220 V	220 V	
Drum speed	5-37 rpm		5-37 rpm	
Heating type	Gas		Gas	
Efficiency	20 kg/batch		35 kg/batch	
Price				



This machine has 2 functions, one for tea fixation, and one for drying. Usually used for green tea processing, also can used for black tea drying.

► Electric Heating Green Tea Enzymer

Model	DL-6CSTL-D40	DL-6CSTL-D50	DL-6CSTL-D60	DL-6CSTL-D80	
Dimension	700×2300×1250 mm	820×2860×1700 mm	900×3500×1516 mm	1200×5200×2610 mm	
Voltage	380V	220V / 380V	380/50 V/Hz	380/50 V/Hz	
Input power	18 KW	36 KW	62 KW	85 KW	
Inner drum diameter	400mm	500 mm	600 mm	800 mm	
Inner drum length	1800 mm	2500 mm	3000 mm	4000 mm	
Drive motor	Power	0.75 KW	0.75 W	2.2 W	
	Speed	1400 rpm	1400 rpm	1400 rpm	1400 rpm
	Voltage	380 V	380 V	380 V	380 V
Exhaust motor	Power	370 W	370 W	370 W	370 W
	Speed	1400 rpm	1400 rpm	1400 rpm	1400 rpm
	Voltage	380 V	380 V	220 V	380 V
Drum speed	5-37 min	5-37 min	5-37 rpm	5-37 rpm	
Heating type	Electric heating wire	Electric heating wire	Electric heating wire	Electric heating wire	
Efficiency	40 kg/h	80 kg/h	100 kg/h	200 kg/h	
Price (Carbon board barrel)					
Price (Stainless steel barrel)					



► Gas Heating Green Tea Enzymer

Model	DL-6CSTL-Q50	DL-6CSTL-Q60	DL-6CSTL-Q80	DL-6CSTL-Q100	
Dimension	820×2860×1700 mm	990×4060×2190 mm	1200×5200×2610 mm	1420×6500×2810 mm	
Voltage	220V / 380V	220V / 380V	220V / 380V	220V / 380V	
Drum inner diameter	500 mm	600 mm	800 mm	1000 mm	
Drum inner length	2500 mm	3000 mm	4000 mm	4800 mm	
Drive motor	Power	0.75 KW	0.75 KW	2.2 KW	
	Speed	1400 rpm	1400 rpm	1400 rpm	1400 rpm
	Voltage	380 V	380 V	380 V	380 V
Air exhausting motor	Power	370 W	370 W	370 W	370 W
	Speed	1400 rpm	1400 rpm	1400	1400
	Voltage	380 V	380 V	380 V	380 V
Drum speed	5-37 min	5-37 min	5-37 min	5-37 min	
Heating type	Gas	Gas	Gas	Gas	
Efficiency	80 kg/h	100 kg/h	200 kg/h	400 kg/h	
Price (Carbon board barrel)					
Price (Stainless steel barrel)					



► Wood / Coal Heating Green Tea Enzymer

Model	DL-6CSTL-CM50	DL-6CSTL-CM60	DL-6CSTL-CM80	DL-6CSTL-CM100	
Dimension	820×2860×1700 mm	990×4060×2190 mm	1200×5200×2610 mm	1420×6500×2810 mm	
Voltage	220V / 380V	220V / 380V	220V / 380V	220V / 380V	
Drum inner diameter	500 mm	600 mm	800 mm	1000 mm	
Drum inner length	2500 mm	3000 mm	4000 mm	4800 mm	
Drive motor	Power	0.75 KW	0.75 KW	2.2 KW	
	Speed	1400 rpm	1400 rpm	1400 rpm	1400 rpm
	Voltage	380 V	380 V	380 V	380 V
Air exhausting motor	Power	370 W	370 W	370 W	370 W
	Speed	1400 rpm	1400 rpm	1400	1400
	Voltage	380 V	380 V	380 V	380 V
Drum speed	5-37 min	5-37 min	5-37 min	5-37 min	
Heating type	Wood and coal	Wood and coal	Wood and coal	Wood and coal	
Efficiency	80 kg/h	100 kg/h	200 kg/h	400 kg/h	
Price (Carbon board barrel)					
Price (Stainless steel barrel)					



TEA KNEADING MACHINE

Чай прокатки машина

Double-Arm
Двухрукий станок

Single-Arm
Машина с одной рукой



Automatic Tea Rolling Group
автоматическое чай прокатка группы

► Tea Rolling Machine

Model	DL-6CRT-25	DL-6CRT-30
Dimension	720*640*945 mm	870*700*995 mm
Input voltage	220V / 50Hz	220V / 50Hz
Tea disc diameter	485 mm	585 mm
Barrel diameter	250 mm	300 mm
Barrel height	180 mm	210 mm
Matching motor	Power	0.37 kW
	Speed	1400 RPM
	Rated voltage	220 V
Barrel speed	42 RPM	42 RPM
Weight	110 kg	147 kg
Capacity per batch	3 kg/batch	5 kg/batch
Capacity for green tea	3-30 kg/h	5-50 kg/h
Capacity for black tea	3-6 kg/h	5-10 kg/h
Price		



► Tea Rolling Machine

Model	DL-6CRT-35	DL-6CRT-40
Dimension	820*900*1260 mm	860*1030*1260 mm
Input voltage	220V / 50Hz	380V / 50Hz
Tea disc diameter	720 mm	795 mm
Barrel diameter	350 mm	400 mm
Barrel height	260 mm	250 mm
Matching motor	Power	1.1 kW
	Speed	1400 RPM
	Rated voltage	220 V
Barrel speed	42 RPM	42 RPM
Weight	220 kg	235 kg
Capacity per batch	8 kg/batch	11 kg/batch
Capacity for green tea	8-80 kg/h	11-110 kg/h
Capacity for black tea	8-16 kg/h	11-22 kg/h
Price		



► Tea Rolling Machine

Model	DL-6CRT-45	DL-6CRT-50
Dimension	910*1080*1280 mm	1020*1100*1300 mm
Input voltage	380V / 50Hz	380V / 50Hz
Tea disc diameter	885 mm	1000 mm
Barrel diameter	450 mm	500 mm
Barrel height	280 mm	280 mm
Matching motor	Power	1.5 kW
	Speed	1400 RPM
	Rated voltage	380 V
Barrel speed	52 RPM	60 RPM
Weight	310 kg	400 kg
Capacity per batch	15 kg/batch	20 kg/batch
Capacity for green tea	15-150 kg/h	20-200 kg/batch
Capacity for black tea	15-30 kg/h	20-40 kgbatch
Price		



► Tea Rolling Machine

Model	DL-6CRT-55	DL-6CRT-65
Dimension	1580*1400*1390 mm	1490*1390*1620 mm
Input voltage	380V / 50Hz	380V / 50Hz
Tea disc diameter	1050 mm	1210 mm
Barrel diameter	550 mm	650 mm
Barrel height	400 mm	480 mm
Matching motor	Power	2.2 kW
	Speed	1400 RPM
	Rated voltage	380 V
Barrel speed	45 RPM	44 RPM
Weight	470 kg	690 kg
Capacity per batch	35 kg/batch	60 kg/batch
Capacity for green tea	35-350 kg/h	60-600 kg/h
Capacity for black tea	35-70 kg/h	60-120 kg/h
Price		



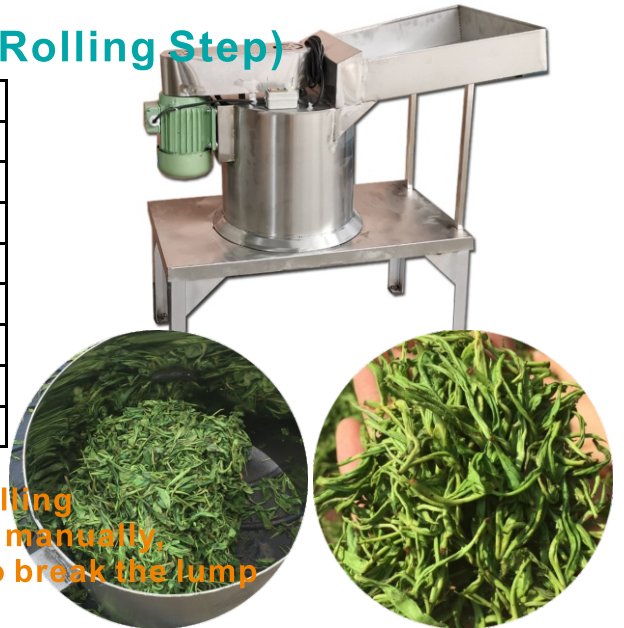
► Tea Rolling Machine

Model	DL-6CRT-75	DL-6CRT-85
Dimension	2050*1670*2050 mm	2200*1800*2150 mm
Input voltage	380V / 50Hz	380V / 50Hz
Tea disc diameter	1310 mm	1600 mm
Barrel diameter	750 mm	850 mm
Barrel height	580 mm	700 mm
Matching motor	Power	4 kW
	Speed	1430 RPM
	Rated voltage	380 V
Barrel speed	35 RPM	35 RPM
Weight	1075 kg	1350 kg
Capacity per batch	100 kg/h	240 kg/h
Capacity for green tea	100-1000 kg/h	240-2400 kg/h
Capacity for black tea	100-200 kg/h	240-480 kg/h
Price		



► Tea Lump Breaking Machine (After Rolling Step)

Model	DL-6CJK-40B	
Voltage	220V / 380V	
Dimension	1000*600*1100 mm	
Drum diameter	400 mm	
Drive motor	Power	0.55 KW
	Speed	1400 rpm
	Voltage	380 V
Materials	Stainless Steel	
Price		



Black tea rolling time need 40-90 minutes, after rolling the tea will be into tea lump. Before, it was broken manually, now we use this machine only take few seconds to break the lump



Fully Automatic Rolling Group



Rolling Machine With Table

REMOVING GREEN MACHINE

茶叶解块成型系列

▼
条形、
颗粒、
压饼



颗粒成型成套设备

► **Granular Type Tea Canvas Warringing Machine (First Step)**

Model		DL-6CSBG-20
Dimensions(L×W×H)		1060×630×1010 mm
Input voltage / frequency		380/50 V/Hz
Rubbed stick height		220 mm
Lead screw drive motor	Power	0.75 kW
	Rotating Speed	1400 r/min
	Rated Voltage	380 V
Rubbed stick drive motor	Power	1.1 kW
	Rotating Speed	1400 r/min
	Rated Voltage	380 V
Output per hour		100 Kg/h
Price		



► **Granular Type Tea Canvas Rolling Machine (Second Step)**

Model		DL-6CBRP-70
Input Power		380V/HZ
Dimensions		710×710×1320mm
Rolling disc diameter		700mm
Rolling disc drive motor	Power	1.1kW
	Rotating Speed	1400r/min
	Rated Voltage	380V
Rolling disc up / down motor	Power	0.38kW
	Rotating Speed	1400r/min
	Rated Voltage	380V
Price		



► **Hot Air Tea Lump Breaking Machine (For Granular Type Tea)**

Model		DL-6CSST-100R
Voltage		380 V/HZ
Dimensions		1750×1450×1570 mm
Diameter of inner barrel		1000 mm
Straight length of inner barrel		1000 mm
Electric motor	power	0.75 kW
	Rotating speed	1400 r/min
	Rated voltage	380 V
Total heating power		18 kW
Speed of barrel		36 r/min
Diameter of sieve(Could be		2 mm
Price		



▶ Semi Automatic Granular Type Tea Press Shaping Machine

Model	6CCXJ-6080
Dimensions	1760×1870×1600 mm
Inner cavity size	800×600×250 mm
Minimum size of material	300×100×250 mm
Pressurization method	Hydraulic
Maximum pressure	16 MPa
Driving power	5.5 kW
Motor speed	1400 r/min
Rated Voltage	380 V
Price	



▶ Fully Automatic Granular Type Tea Press Shaping Machine

Model	6CCXJ-6585L
Input power	380/50V/HZ
Dimensions	2250×1850×1780mm
Inner cavity size (L×W×H)	650×500×850mm
Minimum size of material	250×150×270mm
Pressurization method	Hydraulic
Maximum pressure	20MPa
Driving power	7.5kW
Motor speed	1400r/min
Rated Voltage	380V
Price	



▶ Fully Automatic Tea Cake Press Machine

Model	DL-6CYL-800
Dimensions	1080×690×1330 mm
Voltage	380V 50Hz
Materials	304 stainless steel
Weight	400 kg
Pressing accuracy	± 0.2 g
Output	650-900 pcs/h
Tea size	Ball / Cake
Power	3.7 kw
Price	



► Tea Carding Shaping Machine Needle Type Tea Shaping Machine

Model	DL-6CLT-8012	DL-6CLT-8012Q
Dimension	1600×1020×870 mm	1600×1020×870 mm
Voltage	380/50 V/Hz	380/50 V/Hz
Heating element	Electric heating wire	Gas
Total heating power	24 KW	/
Heating element group	8 Group	/
Swing motor	Power	1.1 KW
	Speed	1400 rpm
	Voltage	380 V
Fan motor	Power	120 W
	Speed	2200 rpm
	Voltage	220 V
Reciprocating swinging	5-35 rpm	5-35 rpm
Carding groove size	10×800 mm	10×800 mm
Carding groove quantity	12	12
Efficiency per time	2 kg/batch	2 kg/batch
Price		



► Double Pot Tea Roasting Machine Gunpowder Tea Roast Shaping Machine

Model	DL-6CSG-50	DL-6CSG-84
Dimensions	1800×800×1050 mm	1800×800×1050 mm
Voltage	380/50 V/Hz	380/50 V/Hz
Heating element	Heating wire	Heating wire
Total heating power	7.6 kw	15 kw
Heating element group	2	2
Swing arm motor	power	0.75 kW
	Rotating speed	1400 r/min
	Rated voltage	380 V
Fan motor	power	0.15 kW
	Rotating speed	1400 r/min
	Rated voltage	220 V
Number of woks	2	2
Swing arm speed grade	3 files adjustable	Stepless speed regulation
Wok diameter	500 mm	84cm
Capacity Per Pot Per Batch	4-5 kg	35-40 kg
Capacity For Complete	8-10 kg	70-80 kg
Price		



► Flat Type Tea Press Shaping Machine LongJing Tea Shaping Machine

Model	DL-6CCB-891ZD
Dimension	1428*795*1190mm
Motor Power	0.75 KW
Heating Type	Electric Heating
Heating Power	5 KW
Pot Quantity	1 pcs
Pot Materials	Stainless Steel
Pot Size	900*480*185
Speed	29-32 rpm
Capacity	500g/h
Weight	185kg
Price	



► Tea Cake Press Machine

Model	DL-6CY1-15	DL-6CY2-15	DL-6CY3-15
Dimensions	700×760×1700 mm	1200×760×1700 mm	1710×760×1700 mm
Voltage	380/50 V/HZ	380/50 V/HZ	380/50 V/HZ
Pressing work stroke	=200 mm	=200 mm	=200 mm
Pressurization method	Hydraulic	Hydraulic	Hydraulic
Number of stations	1	2	3
Maximum pressure	=120 kN	=120 kN	=120 kN
Driving Power	3 kW	3 kW	3 kW
Motor Speed	1400 r/min	1400 r/min	1400 r/min
Rated Voltage	380 V	380 V	380 V
Output per hour	35 Kg/h	70 Kg/h	105 Kg/h
Price			



► Steam generator

Model	DL-6CZQ-6	DL-6CZQ-24	DL-6CZQ-24
Dimensions	685×418×820 mm	785×618×820 mm	785×618×820 mm
Power supply	380/50 V/HZ	380/50 V/HZ	380/50 V/HZ
Power	6 kW	12 kW	24 kW
Weight	37 kG	42 kG	50 kG
Price			

► Tea Steaming Table

Model	DL-6CZQZ-7012
Dimensions	700×1200×750 mm
weight	26 kG
Materials	Stainless steel
Price	



FOOD DRYING MACHINE

红茶发酵设备系列

▼智能红茶发酵机
全新第八代，智能加温加湿，
让发酵随心所欲





The intelligent black tea fermentation machine can automatically control the temperature and humidity of tea fermentation to keep the black tea fermentation in the optimal environment

► Intelligent Black Tea Fermentation Machine

Model		DL-6CFJ-20QB
Inside materials		Stainless Steel
Outside materials		Stainless Steel
Size		960×775×1600 mm
Voltage		220/50 V/Hz
Heating mode		Heating wire
Heating power		3.3 KW
Heating group		1 Group
Fan motor	Power	60 W
	Speed	2200 rpm
	Voltage	220 V
Tray size		720×520×100 mm
Tray quantity		5 pcs
Tray layers		5
Efficiency		60 kg/time
Price		



► Intelligent Black Tea Fermentation Machine

Model		DL-6CFJ-60	DL-6CFJ-60QB
Inside materials		Stainless Steel	Stainless Steel
Outside materials		Painted Steel Board	Stainless Steel
Size		1130×1100×2040 mm	
Voltage		220/50 V/Hz	
Heating mode		Heating wire	
Heating power		6.0 KW	
Heating group		2 Group	
Fan motor	Power	85 W	
	Speed	2200 rpm	
	Voltage	220 V	
Tray size		720×520×100 mm	
Tray quantity		14 pcs	
Tray layers		7	
Efficiency		150 kg/time	
Price			



► Intelligent Black Tea Fermentation Machine

Model		DL-6CFJ-80	DL-6CFJ-80QB
Inside materials		Stainless Steel	Stainless Steel
Outside materials		Painted Steel Board	Stainless Steel
Size		1570×950×2100 mm	
Voltage		220/50 V/Hz	
Heating mode		Heating wire	
Heating power		6.0 KW	
Heating group		2 Group	
Fan motor	Power	85 W	
	Speed	2200 rpm	
	Voltage	220 V	
Tray size		580×420×100 mm	
Tray quantity		32 pcs	
Tray layers		2×8	
Efficiency		250 kg/time	
Price			



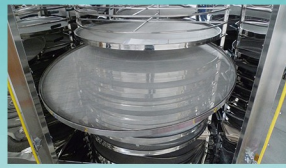
► Intelligent Black Tea Fermentation Machine

Model		DL-6CFJ-120	DL-6CFJ-120QB
Inside materials		Stainless Steel	Stainless Steel
Outside materials		Painted Steel Board	Stainless Steel
Size		1870×1100×2040 mm	
Voltage		380/50 V/Hz	
Heating mode		Heating wire	
Heating power		9.0 KW	
Heating group		3 Group	
Fan motor	Power	85 W	
	Speed	2200 rpm	
	Voltage	220 V	
Tray size		720×520×100 mm	
Tray quantity		32 pcs	
Tray layers		2×8	
Efficiency		350 kg/time	
Price			



FOOD AND TEA DRYING EQUIPMENT

食品茶叶烘干设备



▼食品烘干大家族，
旋转式、抽屉式、
大型链板式连续烘干机



► Electric Heating Tea Drying Cabinet

Model	DL-6CHZ-2	DL-6CHZ-2B	DL-6CHZ-2QB
Sieve materials	Stainless steel	Stainless steel	Stainless steel
Inside board materials	Galvanized sheet	Stainless steel	Stainless steel
Outside board materials	Painted steel board	Painted steel board	Stainless steel
Dimension	710×680×1350 mm		
Voltage	220V 50HZ		
Heating element	Electric heating wire		
Total heating power	3.0 KW		
Heating element group	1 Group		
Fan motor	Power	0.18 KW	
	Speed	1400 rpm	
	Rated voltage	220 V	
Tray rotary motor	Power	15 W	
	Speed	1250 rpm	
	Rated voltage	220 V	
Tray rotary speed	6 rpm		
Tray quantity (Layers)	10 layers		
Tray diameter	50 cm		
Effective drying area	2.12 m ²		
Capacity per batch	6-8 kg/batch		
Price			



► Electric Heating Tea Drying Cabinet

Model	DL-6CHZ-5	DL-6CHZ-5B	DL-6CHZ-5QB
Sieve materials	Stainless steel	Stainless steel	Stainless steel
Inside board materials	Galvanized sheet	Stainless steel	Stainless steel
Outside board materials	Painted steel board	Painted steel board	Stainless steel
Dimension	910×880×1830 mm		
Voltage	220V / 380V		
Heating element	Electric heating wire		
Total heating power	9 kw		
Heating element group	2 Group		
Fan motor	Power	0.55 kw	
	Speed	1400 rpm	
	Rated voltage	220 V	
Tray rotary motor	Power	30 W	
	Speed	1250 rpm	
	Rated voltage	220 V	
Tray rotary speed	6 rpm		
Tray quantity (Layers)	14 layers		
Tray diameter	70 cm		
Effective drying area	5.38 m ²		
Capacity per batch	15-20 kg/batch		
Price			



► Electric Heating Tea Drying Cabinet

Model	DL-6CHZ-9	DL-6CHZ-9B	DL-6CHZ-9QB
Sieve materials	Stainless steel	Stainless steel	Stainless steel
Inside board materials	Galvanized sheet	Stainless steel	Stainless steel
Outside board materials	Painted steel board	Painted steel board	Stainless steel
Dimension	1420×1100×2190 mm		
Voltage	220V / 380V		
Heating element	Electric heating wire		
Total heating power	13.5 kw		
Heating element group	3 Group		
Fan motor	Power	0.55 kw	
	Speed	1400 rpm	
	Rated voltage	380 V	
Tray rotary motor	Power	40 W	
	Speed	1250 rpm	
	Rated voltage	220 V	
Tray rotary speed	6 rpm		
Tray quantity (Layers)	16 layers		
Tray diameter	90 cm		
Effective drying area	10.1 m ²		
Tray number	16		
Capacity per batch	27-36 kg/batch		
Price			



► Electric Heating Tea Drying Cabinet

Model	DL-6CHZ-14	DL-6CHZ-14B	DL-6CHZ-14QB
Sieve materials	Stainless steel	Stainless steel	Stainless steel
Inside board materials	Galvanized sheet	Stainless steel	Stainless steel
Outside board materials	Painted steel board	Painted steel board	Stainless steel
Dimension	1430×1630×2320 mm		
Voltage	380V 50HZ		
Heating element	Electric heating wire		
Total heating power	18 kw		
Heating element group	3 Group		
Fan motor	Power	0.75 KW	
	Speed	1400 rpm	
	Rated voltage	380 V	
Tray rotary motor	Power	40 W	
	Speed	1250 rpm	
	Rated voltage	220 V	
Tray rotary speed	6 rpm		
Drying pallet diameter	110 cm		
Tray quantity (Layers)	16 layers		
Tray diameter	110 cm		
Effective drying area	14.5 m ²		
Capacity per batch	42-56 kg/batch		
Price			



► Electric Heating Tea Drying Cabinet (2 Racks)

Model	DL-6CHZ-34	DL-6CHZ-34B	DL-6CHZ-34QB
Sieve materials	Stainless steel	Stainless steel	Stainless steel
Inside board materials	Galvanized sheet	Stainless steel	Stainless steel
Outside board materials	Painted steel board	Painted steel board	Stainless steel
Dimension	2600×1800×2900mm		
Voltage	380V 50HZ		
Heating element	Electric heating wire		
Total heating power	36 KW		
Heating element group	6 Group		
Fan motor	Power	3 KW	
	Speed	1400 rpm	
	Rated voltage	380 V	
Tray rotary motor	Power	80 W	
	Speed	1250 rpm	
	Rated voltage	220 V	
Tray rotary speed	6 rpm		
Tray quantity (Layers)	36 layers (2 racks)		
Tray diameter	110 cm		
Effective drying area	34 m ²		
Capacity per batch	100-135 kg/batch		
Price			



► Gas And Electric Heating Tea Drying Cabinet

Model	DL-6CHZ-Q18	DL-6CHZ-Q18B	DL-6CHZ-Q18QB
Sieve materials	Stainless steel	Stainless steel	Stainless steel
Inside board materials	Galvanized sheet	Stainless steel	Stainless steel
Outside board materials	Painted steel board	Painted steel board	Stainless steel
Dimension	1430×1630×2790 mm		
Voltage	380/50 V/Hz		
Gas heating type	Natural gas		
Electric heating type	Electric heating wire		
Electric heating power	18 KW		
Electric heating group	3 Group		
Fan motor	Power	0.55 KW	
	Speed	1400 rpm	
	Rated voltage	220 V	
Pallet rotary motor	Power	40 W	
	Speed	1250 rpm	
	Rated voltage	220 V	
Pallet rotary speed	6 rpm		
Pallet type	Round		
Tray quantity (Layers)	16 layers		
Tray diameter	120 cm		
Effective drying area	18.1 m ²		
Capacity per batch	55-72 kg/time		



Gas Bruner



English Verison Panel

► Electric Heating Small Tea Baking Drum (Bamboo)

Model	DL-6CHBL-20	DL-6CHBL-25	DL-6CHBL-40	DL-6CHBL-50	DL-6CHBL-60	DL-6CHBL-70
Capacity	=500g	=1000g	=2000g	=2500g	=3000g	=7500g
Temp Range	30-150 °C	30-150 °C	30-150 °C	30-150 °C	30-150 °C	30-150 °C
Voltage	160-230V	160-230V	160-230V	160-230V	160-230V	160-230V
Power	400W	400W	900W	1100W	1200W	1800W
Size	22*22*25cm	29*29*34cm	40*40*46cm	54*54*54cm	63*63*63cm	72*72*62cm
Drum size	20*20*15cm	25*25*21cm	37*37*30cm	50*50*38cm	58*58*43cm	65*65*47cm
Heating plate dameter	17cm	22cm	34cm	48cm	54cm	60cm
Packing size	22*23*26cm	32*32*35cm	41*41*47cm	56*56*56cm	65*65*64cm	74*74*64cm
Weight	1.8 kgs	2.8 kgs	4.6 kgs	8 kgs	12 kgs	20 kgs
Price						



Bamboo Drum



Time / Temp Control



Heating Pipe



► Deisel / Gas Heating Chain Plate Dryer

Model	DL-6CHL-CY10	DL-6CHL-CY20	DL-6CHL-CY30	DL-6CHL-CY40	DL-6CHL-CY50	DL-6CHL-CY60	
	DL-6CHL-RQ10	DL-6CHL-RQ20	DL-6CHL-RQ30	DL-6CHL-RQ40	DL-6CHL-RQ50	DL-6CHL-RQ60	
Size	4400*2020*2540mm	4640*2120*2230 mm	6050*2120*2230 mm	7500*2120*2230 mm	8500*2120*2230 mm	9500*2120*2230 mm	
Voltage	220V / 380V	220V / 380V	220V / 380V	380V	380V	380V	
Drying area	10 m ²	20 m ²	30 m ²	40 m ²	50 m ²	60 m ²	
Drying plate later	6	6	8	8	8	10	
Drying time	8-90 minutes	8-90 minutes	8-90 min	8-90 min	8-90 minutes	8-90 min	
Heating element	Diesel/Gas burner	Diesel/Gas burner	Diesel/Gas burner	Diesel/Gas burner	Diesel/Gas burner	Diesel/Gas burner	
Fuel	Diesel oil / Gas	Diesel oil / Gas	Diesel oil / Gas	Diesel oil / Gas	Diesel oil / Gas	Diesel oil / Gas	
Diesel consumption	3 liter/h	5.5 liter/h	8 liter/h	11 liter/h	13 liter/h	15 liter/h	
Gas consumption	3.8 m ³ /h	6.9 m ³ /h	10 m ³ /h	13.8 m ³ /h	16.3 m ³ /h	18.8 m ³ /h	
Fan motor	Power	1.5 kw	2.2 KW	3 KW	3 KW	4 KW	5 KW
	Speed	1400 rpm	1400 rpm	1400 rpm	1400 rpm	1400 rpm	1400 rpm
	Voltage	220 V	220 V	220 V	380 V	380 V	380 V
Drive motor	Power	1.5 kw	1.5 KW	2.2 KW	3 KW	4 KW	5 KW
	Speed	1400 rpm	1400 rpm	1400 rpm	1400 rpm	1400 rpm	1400 rpm
	Voltage	220 V	220 V	220 V	380 V	380 V	380 V
Feed motor	Power	0.55 kw	0.55 kw	0.55 kw	0.55 kw	0.55 kw	0.55 kw
	Speed	1400 rpm	1400 rpm	1400 rpm	1400 rpm	1400 rpm	1400 rpm
	Voltage	220 V	220 V	220 V	380 V	380 V	380 V
Moisture content of wet	~ 50%	~ 50%	~ 50%	~ 50%	~ 50%	~ 50%	
Moisture content of	=5%	=5%	=5%	=5%	=5%	=5%	
Weight loss per m ² per	6 kg	6 kg	6 kg	6 kg	6 kg	6 kg	
Capacity for wet tea	120 kg/h	250 kg/h	370 kg/h	490 kg/h	610 kg/h	735 kg/h	
Capacity for dried tea	70 kg/h	140 kg/h	200 kg/h	270 kg/h	330 kg/h	400 kg/h	
Price							



► Wood / Coal Heating Chain Plate Dryer

Model	DL-6CHL-CM10	DL-6CHL-CM20	DL-6CHL-CM30	DL-6CHL-CM40	DL-6CHL-CM50	DL-6CHL-CM60
Size	6400*2020*2040	6640*2120*2030 mm	9050*2120*2230 mm	10500*2120*2230 mm	11500*2120*2230 mm	12500*2120*2230 mm
Voltage	220V / 380V	220V / 380V	220V / 380V	380V	380V	380V
Drying area	10 m ²	20 m ²	30 m ²	40 m ²	50 m ²	60 m ²
Drying plate later	6	6	8	8	8	8
Drying time	8-90 minutes	8-90 minutes	8-90 min	8-90 min	8-90 minutes	8-90 min
Heating element	Hot air stove	Hot air stove	Hot air stove	Hot air stove	Hot air stove	Hot air stove
Fuel	Wood/coal/pellet fuels	Wood/coal/pellet fuels	Wood/coal/pellet fuels	Wood/coal/pellet fuels	Wood/coal/pellet fuels	Wood/coal/pellet fuels
Oven model	FP-100	FP-100	FP-120	FP-150	FP-150	FP-150
Wood consumption	120-140 kg/h	120-140 kg/h	170-190 kg/h	210-240 kg/h	210-240 kg/h	210-240 kg/h
Drive motor	Power	1.5 kw	1.5 KW	2.2 KW	3 KW	4 KW
	Speed	1400 rpm	1400 rpm	1400 rpm	1400 rpm	1400 rpm
	Voltage	220 V	220 V	220 V	380 V	380 V
Feed motor	Power	0.55 kw	0.55 kw	0.55 kw	0.55 kw	0.55 kw
	Speed	1400 rpm	1400 rpm	1400 rpm	1400 rpm	1400 rpm
	Voltage	220 V	220 V	220 V	380 V	380 V
Moisture content of wet tea	~ 50%	~ 50%	~ 50%	~ 50%	~ 50%	~ 50%
Moisture content of dried tea	=5%	=5%	=5%	=5%	=5%	=5%
Weight loss per m ² per hour	6 kg	6 kg	6 kg	6 kg	6 kg	6 kg
Capacity for wet tea	120 kg/h	250 kg/h	370 kg/h	490 kg/h	610 kg/h	735 kg/h
Capacity for dried tea	70 kg/h	140 kg/h	200 kg/h	270 kg/h	330 kg/h	400 kg/h
Price						



► Wood / Coal Heating Hot Air Oven

Model	FP-100	FP-120	FP-150
Dimension	1000×1300×2200 mm	1200×1600×2580 mm	1500×1900×3300 mm
Wood consumption	120-140 kg/h	170-190 kg/h	210-240 kg/h
Coal consumption	60-70 kg/h	80-90 kg/h	110-120 kg/h
Blower motor	Power	5.5 KW	5.5 KW
	Speed	1400 rpm	1400 rpm
	Voltage	380 V	380 V
Air inlet motor	Power	1.5 KW	1.5 KW
	Speed	1400 rpm	1400 rpm
	Voltage	380 V	380 V



TEA FINE FINISHING EQUIPMENT

Оборудование для отделки чая



▶ Tea Cutting,
Sieve,
Pick Stalk,
Sort Equipment

► Vibration And Wincwing Sorter

Model	DL-6CFX-435QB	
Dimensions	980×520×1190 mm	
voltage / frequency	220/50 V/HZ	
Total Power	300 W	
Grade	4 Level	
Weight	55 KG	
Fan power	0.12 kW	
Motor speed	1500 r/min	
Rated voltage	220 V	
Vibration motor	power	0.18 kW
	Rotating speed	1400 r/min
	Rated voltage	220 V
Price		



Sort - stone / tea / dust / big leaf

► Vibrating Sorting Machine (Sort Different Length Tea)

Model	DL-6CDS-100-3	
Voltage	220V 50Hz	
Working type	Reciprocating	
Size	1400×650×1050mm	
Outlet number	3	
Sieve plate number	3 pcs	
Sieve plate size	900×450 mm	
Motor power	0.18 kw	
Price		



Sort - different length of tea

► Stepped Vibration Stalk Picker

Model	DL-6CJJG-80	
Working Type	Step Vibration Type	
Dimensions	1780×1050×1630 mm	
Voltage	220V 50Hz	
Power	0.55 kw	
Vibration frequency	686~915 Hz	
Picking Width	820 mm	
Capacity	80~120 kg/h	
Weight	200 kg	
Price		



Sort - pearl / gunpowder / granular tea and tea stalk (stem)

► Bottom Blowing Wincwing Sorter

Model	DL-6CFX-F30-3	
Voltage	220V 50HZ	
Dimension	1200×1000×1330 mm	
Speed Control Mode	Stepless Speed Regulation	
Machine Weight	62 kgs	
Capacity	100 kg/h	
Price		



Sort - tea and dust (For handpicked tea)

► Large Type Winnow Sorting Machine

Model	DL-6CFX-40
Dimensions	4080×760×2130 mm
voltage / frequency	380/50 V/Hz
Feeding method	Hoister
Grade	4 Level
Fan speed control mode	YCT speed regulation
Fan power	1.5 kW
Motor speed	1400 r/min
Rated voltage	380 V
Hoist Power	1.1 kW
Lifting Height	1560 mm
Conoveying Bandwidth	225 mm
Output per hour	500 Kg/h
Price	



Sort - stone / tea / dust / big leaf

► Plane circular screening machine

Model	DL-6CPYS-170
Dimension	4100×1700×2200mm
Form	Single layer four screen rotary
Outlets	5
Tilt angle of screen surface	6.5 degree
Size of screening	1700×700mm
Sieve bed gyration radius	30mm
Sieve bed speed	230 Rpm
Power	1.1KW
Capacity	500-700kg/h
Price	

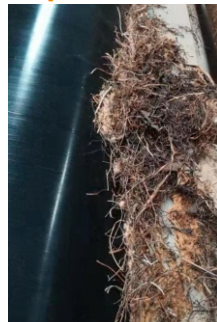


Sort - different length of tea

► Electrostatic Dust Removal Cleaner

Model	DL-6CJZ-99-6B	DL-6CJZ-135-6B	DL-6CJZ-135-8B	DL-6CJZ-135-10B
Size	7245×1665×1885mm	7245×2025×1885mm	7955×2025×1885mm	9070×2025×1885mm
Power	2.42 kw	2.77 kw	2.97 kw	2.97 kw
Roller Length	990 mm	1350 mm	1350 mm	1350 mm
Roller Quantity	6 pcs	6 pcs	8 pcs	10 pcs
Rate	=92%	=92%	=95%	=95%
Capacity	=300	=400	=400	=400
Price				

Sort - dust, hair, broom bristles, tea fluff ash, thatch, woven bag silk, plastic scraps, iron filings, etc



TEA PACKING EQUIPMENTS

Оборудование для упаковки чая



▶ Tea Bags,
Vacuum Bags,
Square Bag,
So on.

► Tea Crusher Shredder Machine

Model	DL-6CCQ-63
Dimension	950*1050*1450 mm
Input voltage	380V / 50HZ
Cutting roller diameter	96 mm
Cutting roller length	630 mm
Distance of roller and blade	0.3 mm
Disstance of roller teeth	4/6/8/10mm
Cutting roller speed	260 rpm
Motor power	0.75 kw
Cpacity	300 kg/h
Price	



For packing tea in bags, some tea size is large, you may need this machine crush tea into small pieces

► Tea Weighting Filling Machine

Model	DL-6CFZ-10	DL-6CFZ-20	DL-6CFZ-100	DL-6CFZ-200	DL-6CFZ-500
Operating Voltage	220 V	220 V	220 V	220 V	220 V
Dimensions	42*32*55cm	42*32*55cm	42*32*55cm	42*32*55cm	42*32*55cm
Material tray size	300 mm	300 mm	300 mm	300 mm	300 mm
Weighing range	1-10 g	1-20 g	1-100 g	10-200 g	10-500 g
Weighing error	±0.1 g	±0.2 g	±0.2 g	±0.5 g	±1 g
Work efficiency	15-20 bags/min	15-20 bags/min	15-20 bags/min	15-20 bags/min	15-20 bags/min
Price					



► Tea Weighting Filling Machine

Model	DL-6CFZ-999	DL-6CFZ-2500
Dimension	61*38*142 cm	61*38*142 cm
Voltage	220V / 110V	220V / 110V
Weight range	1-999 g	10-2500 g
Weight error	±0.5 g	±1 g
Scale Quantity	1 pcs	1 pcs
Power	370 W	370 W
Packing speed	15-20 bags/min	15-20 bags/min
Price		



► Bag / Pouch Vacuum Sealing Machine

Model	DL-6CBZ-30	DL-6CBZ-40
Dimension	680×480×690 mm	880×530×820 mm
Input voltage /	220/50 V/Hz	220/50 V/Hz
Heating element	Heating wire	Heating wire
Maximum vacuum	0.08 MPa	0.08 MPa
Effective vacuum size	610×160×300 mm	830×220×400 mm
Seal size	610 mm	800 mm
Number of seals	2	2
Number of seals per	20-35 times / hour	20-35 times / hour
Price		



► Bag / Pouch Continuous Sealing Machine

Model	DL-6CFR-900
Size	60×35×32cm
Power	500W
Sealing Speed	0-12 m/minute
Sealing Width	6-12mm
Sealing Temp	30-300℃
Sealing Length	Unlimited
Print Quantity	=39 words
Weight	15kgs
Price	



► Tea Bag Weight Fill Seal Packing Machine

Model	DL-6CND-16
Bag width	50-90 mm
Bag length range	35-100 mm
Work efficiency	6 kg/h (7g)
Operating Voltage	220 V
Dimensions	450*560*920 mm
Price	



► Automatic Dip Tea Bag Packing Machine

Model	DL-6CYD-10W
Voltage	220V / 50HZ
Diamension	1750*740*1950mm
Power	1.6 kw
Inner Bag Length	40-100 mm
Inner Bag Width	45-75 mm
Outer Bag Length	80-120 mm
Outer Bag Width	75-95 mm
Packing Speed	30-40 bag/minutes
Weight Type	Measures Cup
Air pressure	= 0.4 m ³ /minute
Price	



Model	DL-6CYD-10
Voltage	220V / 50HZ
Diamension	800*700*1800 mm
Power	1.6 kw
Inner Bag Length	40-100 mm
Inner Bag Width	45-75 mm
Packing Speed	40-60 bag/minutes
Weight Type	Measures Cup
Price	



► Pyramid/Square Tea Bag Packing Machine

Model	DL-SJ3000-4C
Dimension	390×160×180 cm
Bag roll with	12/14/16 cm
Bag roll diameter	40 cm
Tea bag width	5/6/7 cm
Air source pressure	0.6 Mpa
Power	0.8 kw
Weight range	1-15 g
Capacity	2000-4500 bags/h
Scale quantity	4/6 pcs
Bag Type	Pyramid/Square bag with outer bag
Price	



Model	DL-SJ3000-4CJ
Dimension	160×160×180 cm
Bag roll with	12/14/16 cm
Bag roll diameter	40 cm
Tea bag width	5/6/7 cm
Air source pressure	0.6 Mpa
Power	0.8 kw
Weight range	1-15 g
Capacity	2000-4500 bags/h
Scale quantity	4/6 pcs
Bag Type	Only pyramid/Square bag
Price	



得力 农业机械

泉州得力农林机械有限公司

Quanzhou Deli Agroforestril Machinery Co., Ltd

地址: 福建省安溪县城厢镇德苑工贸园冬兴路12号

ADD: Dongxing District, Deyuan Industrial And Trade Zone, Anxi County, Fujian Province

电话 / Tel: +86-595-23142888 传真 / Fax: +86-595-23142999

WeChat / WhatsApp / Phone : +86 18120033767

网址 / Website: [Https://www.delijx.com](https://www.delijx.com) E-mail: info@delijx.com



We Chat



Website